

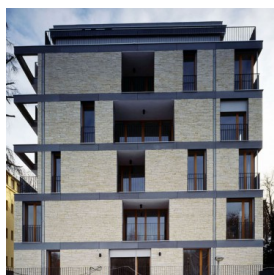
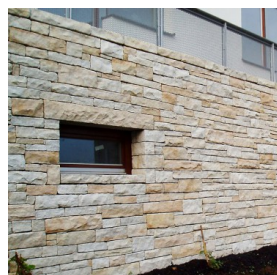


## Kalahari

Beautiful and noble stone cladding with sandstone color. **With its lower weight it is suitable for bonding straight to thermal insulation system (ETICS) without concrete base.** It requires a few important rules. With Kalahari we work in horizontal lines with variable heights. There is option to supply corner pieces for more massive look of stone facade.

Suitable for: stone facade, cladding on exterior fence or interior wall.

**Material price: 1 650 Kč/m<sup>2</sup>** (excluding VAT)



<b>Type</b>	Natural splitted stone, one side cutted
<b>Color</b>	Beige, white
<b>Shape</b>	Rectangular natural strap
<b>Dimensions</b>	Length: 10-30 cm, thickness: 2-3 cm, height: 3-10 cm
<b>Weight</b>	Max. 70 kg/m <sup>2</sup>
<b>Packing</b>	Pallets
<b>Term of delivery</b>	2-4 weeks
<b>Frost resistance</b>	Yes
<b>Suitable for thermal insulation system</b>	Yes, cement adhesive